

Demolition Grapple

多功能抓

The strong fully integrated hydraulic rotator can withstand greater external force.

坚固的全集成式液压旋转器, 可以承受更大的外力。

The wear-resistant steel is adopted to make the grapple with good wear resistance and long service life.

抓斗底部采用特殊耐磨钢, 耐磨性好, 使用寿命长。

The design of an integrated motor base reduces the wear of gear and rotary slewing support, which effectively protects tooth surface and prolongs its life time.

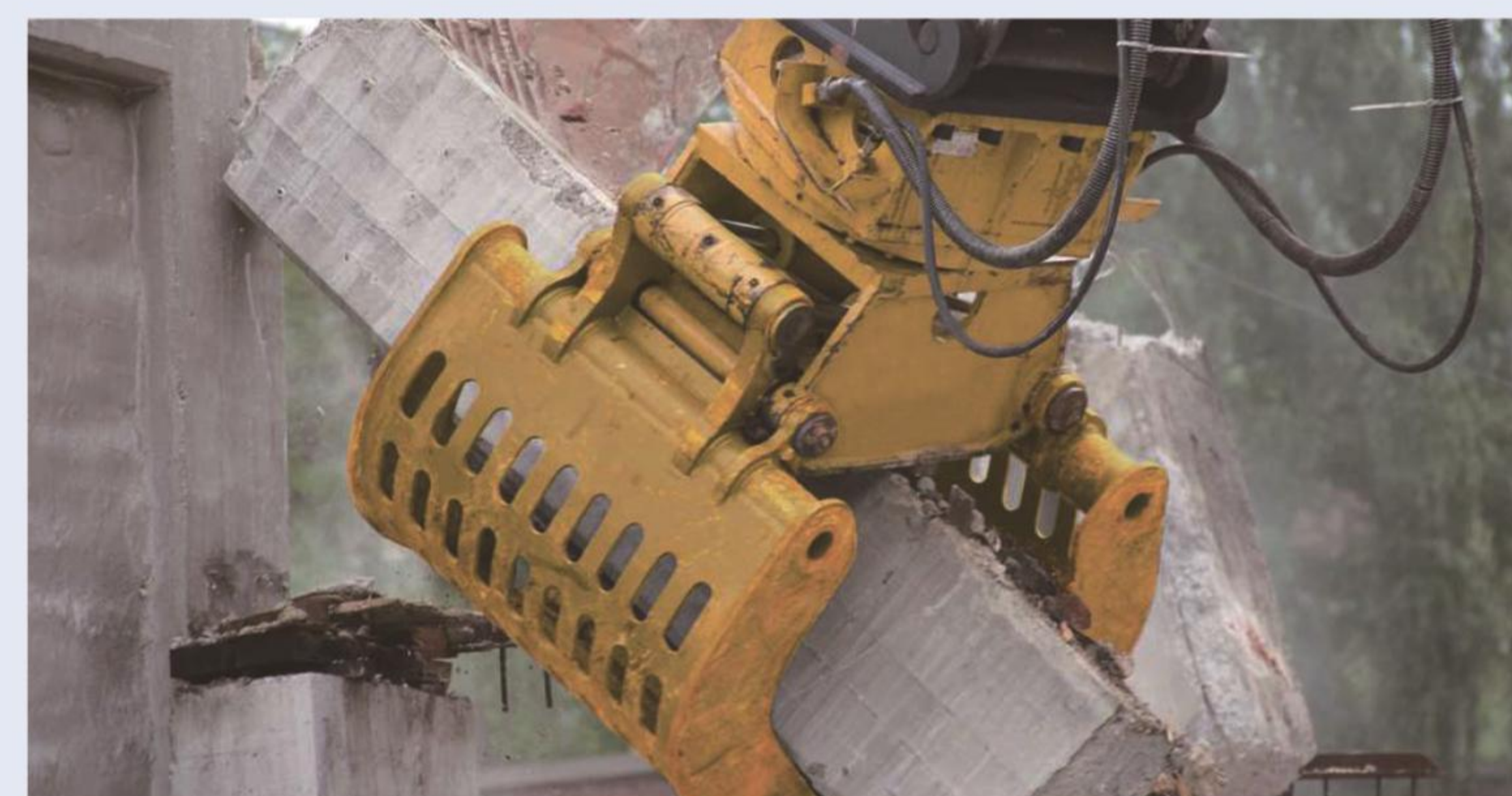
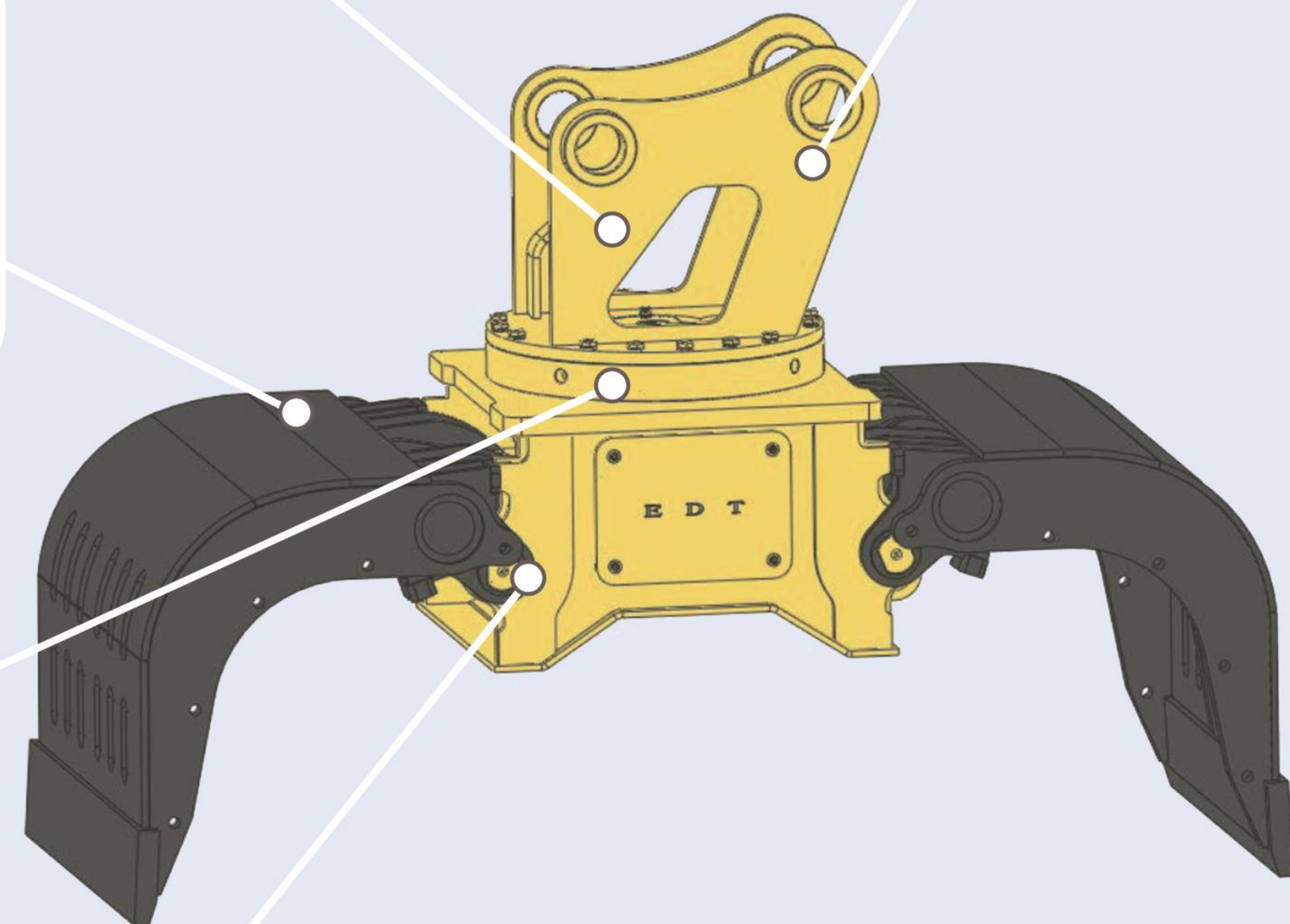
马达底座一体式设计, 减少了齿轮与回转支撑的磨损, 有效保护齿面, 延长使用寿命。

The large volume hydraulic cylinder greatly improves the grab capacity.

大容量液压油缸, 极大提高了多功能抓的抓载能力。

With the design of double balance control valve, the shock on motor would be reduced greatly when the motor is in conversion and when it stops.

双平衡控制阀设计, 大大降低了马达正反转转换及其停止动作时所受的冲击。



Specifications 技术参数

		FMG03	FMG04	FMG06
Outline Dimension 外形尺寸	A	(In Developing)	(In Developing)	1900 mm
	B			1182 mm
	C			900 mm
	H			1588 mm
	H1			1340 mm
Total Weight	总 重	430kg	500kg	750kg
Capacity	容 量	0.23m ³	0.3m ³	0.5m ³
Max. Grab Force	最大夹力	1600kg	1800kg	2700kg
Max. Open Width	最大张幅	1500mm	1600mm	1900mm
Grab Width	钳口宽度	700mm	750mm	900mm
Total Length	总 长 度	1250mm	1336mm	1586mm
Suitable Carrier	配用挖掘机	3-6.5 ton	7-11 ton	12-17 ton
Working Pressure	工作 压力	160~180kg/cm ²	160~180kg/cm ²	180~220kg/cm ²
Working Mode	工作 模式	Motor rotary, 360° free rotation 马达驱动, 360°任意角度自由旋转		

Outline Dimension 外形尺寸

